



**SOUTHERN
TIER TRAIL**

FEASIBILITY STUDY
VIRTUAL PUBLIC MEETING - AUGUST 19, 2020

Agenda

- A. Introduction
 - B. Project Scope
 - C. Vision & Goals
 - D. Study Progress - Overview
 - E. Alternatives Analysis
 - F. Review of Draft Route
 - G. Next Steps
 - H. Q&A
 - I. Public Input Demo
-

Introduction



Introduction



Justin Booth
Executive Director
GObike



Lindsay Zefting
Senior Engineering
Associate
Alta Planning + Design



Ashley Smith
Deputy Director
GObike



Laura Byer
Senior Planner
Alta Planning + Design



Cindy Wood
Engagement Coord.
GObike

Poll - Who's here?



**SOUTHERN
TIER TRAIL**

A decorative graphic element consisting of several parallel diagonal lines on the left side of the page.

SOUTHERN TIER TRAIL FEASIBILITY STUDY



Vision

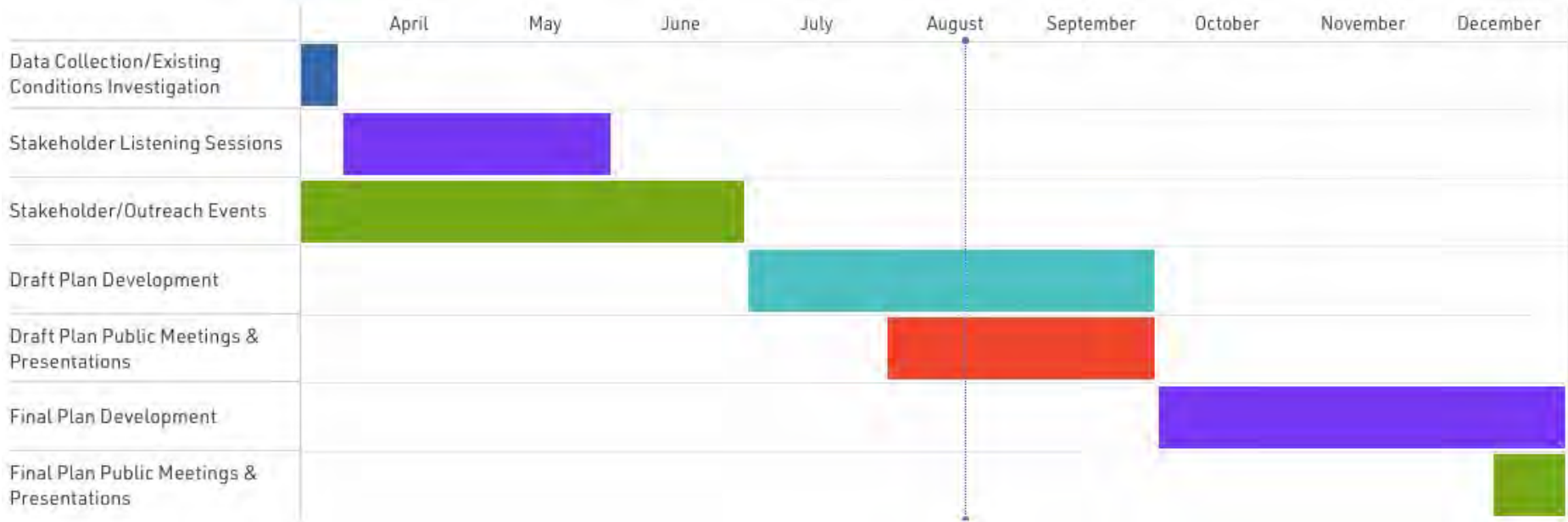


Vision



Connectivity - Health & Wellness - Environment & Education

Study Progress



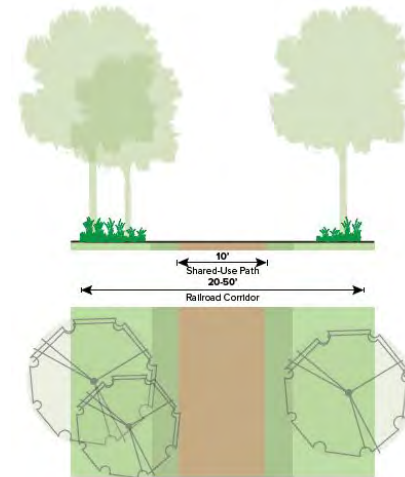
Alternatives

Criteria & evaluation

- Feasibility / Capacity to Build
- Public Support
- Cost
- Access to Destinations
- Accessibility / Family Friendliness
- Safety
- Environmental Values
- User Groups

Preferred route

Typical sections



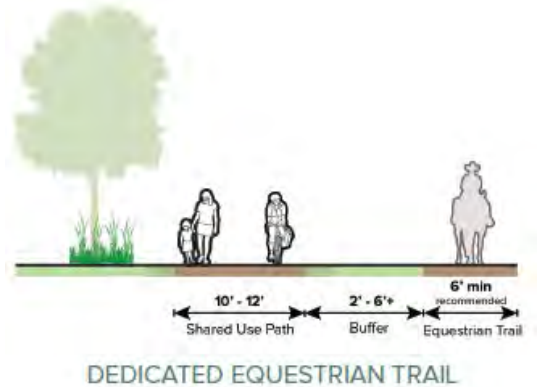
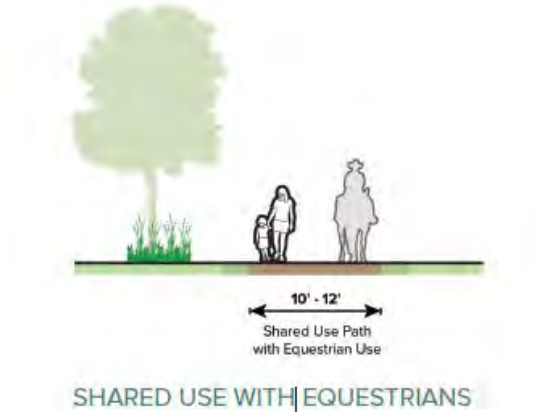
User Groups

Pedestrians

Bicyclists

Equestrians

Snowmobiles



Trailheads & Access Points

Trailheads:

- Parking
- Wayfinding / kiosks
- Benches / trees
- Picnic tables
- Bike racks / fix-it stations

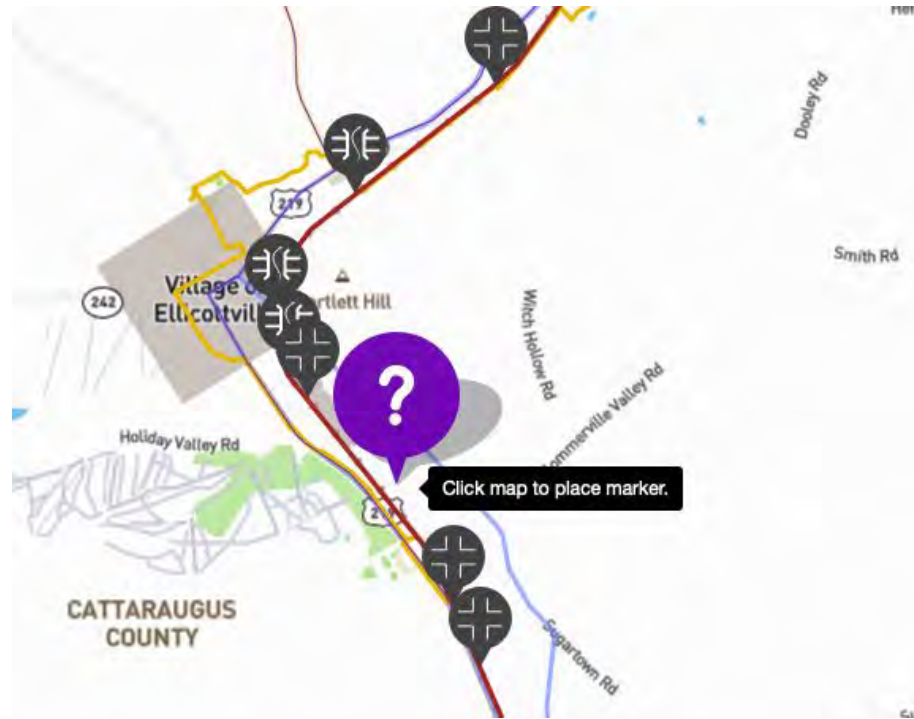
Access Points:

- Limited parking
- Wayfinding
- Optional benches / bike racks



Empire State Trail trailhead located in Hudson, NY

Preferred Route & Public Input Map



Next Steps

Public Engagement Period - through September 19th

Send questions, comments and general feedback to:

Ashley@gobikebuffalo.org

Next Steps

Develop Plan Recommendations

- a. Refine preferred route
- b. Plan for amenities (trailheads, user types, etc.)

Consider business development opportunities to support trail maintenance and management

Final plan presentation in Winter 2020/2021



**SOUTHERN
TIER TRAIL**

Questions

Citations

American Association State Highway and Transportation Officials. (2010) "Projects And Paychecks: A One-year Report On State Transportation Successes Under The American Recovery And Reinvestment Act."

Beeton, S. (2006). Sustainable tourism in practice: Trails and tourism. *Critical management issues of multi-use trails. Tourism and Hospitality Planning & Development*, 3(1), 47-64.

Götschi, Thomas; Hadden Loh, Tracy. (2017) "Advancing project-scale health impact modeling for active transportation: A user survey and health impact calculation of 14 US trails." *Journal of Transport & Health*. 4, 334-347. Retrieved from:
<http://www.sciencedirect.com/science/article/pii/S2214140516303255>

Citations

Scipione, Paul. (2014) "The Economic Impact of the Erie Canalway Trail: An Assessment and User Profile of New York's Longest Multi-use Trail." Retrieved from:

https://www.ptny.org/application/files/2714/4604/5359/Economic_Impact_of_the_Erie_Canalway_Trail_Full_Document.pdf

Weber, Sarah; Bynum Boley, B.; Palardy, Nathan, Johnson Gaither, Cassandra. (2017)

"The impact of urban greenways on residential concerns: Findings from the Atlanta BeltLine Trail." *Landscape and Urban Planning*. 167, 147-156. Retrieved from:

<http://www.sciencedirect.com/science/article/pii/S0169204617301457>

Various Resources from AmericanTrails.org

<https://www.americantrails.org/resources/trail-effects-on-neighborhoods-home-value-safety-quality-of-life>
